



TWF INTERNATIONAL LTD
2022



CONTENTS

MATERIALS & CONSTRUCTION	3	KIDS SHORTIES	14	BODYBOARDS & SKIMBOARDS	26
XT3 WETSUITS	4	RASH VESTS	16	STAND UP PADDLE BOARDS	30
Mens	5	BABY & TODDLER	18	CHANGING ACCESSORIES	32
Ladies	6	FOOTWEAR	20	MASK, SNORKEL & FINS	34
Kids	7	HOODS, GLOVES & BOOTS	22	SIZE GUIDE	35
TURBO WETSUITS	10	LIFE JACKETS & BUOYANCY AIDS	24		
Mens	11				
Ladies	12				
Kids	13				

TWF International Ltd has been supplying wetsuits and beach accessories from Cornwall since 1969. With 50 years of experience in manufacturing and designing wetsuits TWF have developed a high quality range of summer wetsuits, rash vests, baby wetsuits & accessories as well as variety of footwear and bodyboards.

MATERIALS



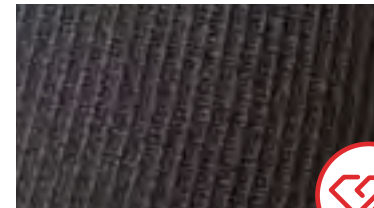
MESH CHEST PANEL

Durable textured skin finish on the surface of the neoprene for reduced wind chill.



SUPERSTRETCH FABRIC

4-way superstretch material in the shoulder areas allows freedom of movement during action watersports like surfing, kayaking, sailing.



DURATEX KNEES

Durable textured double knit nylon which stretches as you move and protects the knees from knocks and scuffs against hard surfaces.

CONSTRUCTION



FLATLOCKED SEAMS

Flatlock is a strong, comfortable, flat stitch. Formed by overlapping the neoprene and stitching the two pieces together.



3/2MM ULTRALIGHT FOAM

TWF uses a combination of multiple thickness Ultralight neoprene for increased flexibility and warmth in crucial areas.



BACKZIP

Back entry system. YKK zip.

XT3

3mm thick, polyester and nylon lined, mesh chest and back panels (to prevent windchill) and an adjustable collar. This suit is a great durable all-rounder. The ample thickness and mesh panels make this wetsuit suitable for use from Spring to Autumn. The super-stretch shoulders and sleeves enable freedom of movement in all water-based activities. Provides maximum UV protection.

TWF XT3 3MM MENS FULLSUIT - 1910

SIZES: SML | MED | MTL | MLG | LGE | XLG | XXL | 3XL



Black - 20

Blue - 21

Red - 22

TWF XT3 3MM MENS SHORTIE - 1911

SIZES: SML | MED | MLG | LGE | XLG | XXL | 3XL



Black - 20

Blue - 21

Red - 22

FEATURES:

- 100% Titanium flatlocked stitching for comfort
- Superlite ultra stretch sleeves & back panel
- Mesh chest panel reduces windchill
- New density neoprene for maximum wear
- Certified UPF 50+ maximum UV protection
- Glide skin adjustable collar system
- Colour co-ordinated stitching
- No underarm seams
- Non-corrosive PK zipper & Velcro zip lock
- Duratex stretch knee pads
- Pre-bent knees & elbows
- Free fit ankles with raw edges

TWF XT3 3MM LADIES FULLSUIT - 1910

SIZES: 08 | 10 | 12 | 12/14 | 14 | 16 | 18 | 20 | 22 | 24



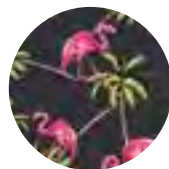
Black - 20



Blue - 21



Pink - 25



TWF XT3 3MM LADIES SHORTIE - 1911

SIZES: 08 | 10 | 12 | 12/14 | 14 | 16 | 18 | 20 | 22 | 24



Black - 20



Blue - 21



Pink - 25



FEATURES:

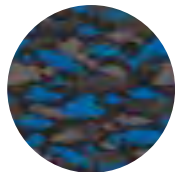
- 100% Titanium flatlocked stitching for comfort
- Superlite ultra stretch sleeves & back panel
- Mesh chest panel reduces windchill
- New density neoprene for maximum wear
- Certified UPF 50+ maximum UV protection
- Glide skin adjustable collar system
- Colour co-ordinated stitching
- No underarm seams
- Non-corrosive PK zipper & Velcro zip lock
- Duratex stretch knee pads
- Pre-bent knees & elbows
- Free fit ankles with raw edges

TWF XT3 3MM KIDS FULLSUIT - 1910

SIZES: K03 | K04 | K06 | K07 | K08 | K09 | K11 | K12 | K13 | K15



Fins - 20



Camo - 21



Red - 22



Amber - 23



Pink - 25



Lime - 29

FEATURES:

- 100% Titanium flatlocked stitching for comfort
- Superlite ultra stretch sleeves & back panel
- Mesh chest panel reduces windchill
- New density neoprene for maximum wear
- Certified UPF 50+ maximum UV protection
- Glide skin adjustable collar system
- Colour co-ordinated stitching
- No underarm seams
- Non-corrosive PK zipper & Velcro zip lock
- Duratex stretch knee pads
- Pre-bent knees & elbows
- Free fit ankles with raw edges

TWF XT3 3MM KIDS SHORTIE - 1911

SIZES: K02 | K03 | K04 | K06 | K07 | K08 | K09 | K11 | K12 | K13 | K15



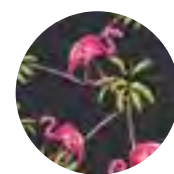
Fins - 20



Camo - 21

Red - 22

Amber - 23



Pink - 25

Lime - 29

FEATURES:

- 100% Titanium flatlocked stitching for comfort
- Superlite ultra stretch sleeves & back panel
- Mesh chest panel reduces windchill
- New density neoprene for maximum wear
- Certified UPF 50+ maximum UV protection
- Glide skin adjustable collar system
- Colour co-ordinated stitching
- No underarm seams
- Non-corrosive PK zipper & Velcro zip lock
- Duratex stretch knee pads
- Pre-bent knees & elbows
- Free fit ankles with raw edges



XT3



2.5mm thick, polyester-lined, large mesh panels on chest and back to prevent windchill. The Turbo has sufficient thickness to make it an ideal wetsuit for the whole summer season. Great for general watersports use providing maximum UV protection.

TURBO 2.5MM MENS FULLSUIT - 1510

SIZES: SML | MED | MLG | LGE | XLG | XXL | 3XL



Green - 09



Red - 02



Blue - 01



Black - 00

FEATURES:

- 2.5mm neoprene
- Mesh chest & back panel reduces windchill
- YKK zip with metal slider & Velcro zip lock
- New density neoprene for maximum wear
- Certified UPF 50+ maximum UV protection
- Flatlocked stitches
- Durable knee pads
- No underarm seams

TURBO 2.5MM MENS SHORTIE - 1511

SIZES: SML | MED | MLG | LGE | XLG | XXL | 3XL



TURBO 2.5MM LADIES FULLSUIT - 1510

SIZES: 08 | 10 | 12 | 14 | 16 | 18 | 20 | 22 | 24



Pink - 05



Blue - 01



Black - 00

TURBO 2.5MM LADIES SHORTIE - 1511

SIZES: 08 | 10 | 12 | 14 | 16 | 18 | 20 | 22 | 24



FEATURES:

- 2.5mm neoprene
- Mesh chest & back panel reduces windchill
- YKK zip with metal slider & Velcro zip lock
- New density neoprene for maximum wear
- Certified UPF 50+ maximum UV protection
- Flatlocked stitches
- Durable knee pads
- No underarm seams

TURBO 2.5MM KIDS SHORTIE - 1511

SIZES: K02 | K03 | K04 | K06 | K07 | K08 | K09 | K11 | K12 | K13 | K15



FEATURES:

- 2.5mm neoprene
- Mesh chest & back panel reduces windchill
- YKK zip with metal slider & Velcro zip lock
- New density neoprene for maximum wear
- Certified UPF 50+ maximum UV protection
- Flatlocked stitches
- Durable knee pads
- No underarm seams

TURBO 2.5MM KIDS FULLSUIT - 1510

SIZES: K03 | K04 | K06 | K07 | K08 | K09 | K11 | K12 | K13 | K15



Blue - 01

Red - 02

Yellow - 04



Pink - 05

Green - 09

SUN PROTECTION • SUN PROTECTION • SUN PROTECTION • SUN PROTECTION • SUN PROTECTION



KIDS SUMMER SHORTIES



KIDS SUMMER SHORTIES

2mm thick, polyester lined. Ideal for high summer paddling & dipping with maximum UV & windchill protection.

PIRATE & SEAHORSE 2MM KIDS SUMMER SHORTIE WETSUIT (AGES 2-10) - 1811

SIZES: K02 (0) | K03 (0) | K04 (1) | K06 (2) | K08 (3) | K09 (4) | K10 (5)



Pink - 05



Blue - 08



Lilac - 07



Blue - 01



Red - 02



Yellow - 04



Green - 09

FEATURES:

- UPF 50+
- New density neoprene for maximum wear
- Flatlocked stitching
- Zip with plastic slider & Velcro ziplock
- For beach & sea use
- 2mm neoprene

TWF RASH VEST

The TWF short sleeve rash vest provides constant UPF protection & features a high collar to keep the sun off your neck. Wear the rash vest under a wetsuit to give added comfort and protection against irritation. Used with a wetsuit, the rash vest also adds a layer of insulation to help keep you warmer in the water for longer. They are made from highstretch Lycra for breathability & have been constructed with Raglan sleeves to reduce seams & increase protection. The rash vests come in unisex sizes.



ADULTS SHORT SLEEVE RASH VEST - 1914

SIZES: SML | MED | LGE | XLG | XXL



Navy/ black



Grey/ black



Navy/ seashell

KIDS SHORT SLEEVE RASH VEST- 1914

SIZES: JSM | JMD | JLG | JXL



Lime blue/ shark



Seashell/ navy



Black/ grey

FEATURES:

- Reglan sleeves
- Use under any wetsuit
- UPF protection
- High stretch Lycra
- Use as a sun protector

BABY & TODDLER RANGE

SWIM NAPPY COVER - 1945

*SIZES: 0-3 MONTHS | 3-6 MONTHS | 6-9 MONTHS |
9-12 MONTHS | 12-18 MONTHS*

FEATURES: Soft lightweight neoprene, polyester lycra hems, stretchy fabric for snug fit, provides extra protection to swim in, complies with the double nappy policy, machine washable on a cold wash.



KIT BAG - 1800

SIZES: ONE SIZE



VELCRO WETSHOES - 1950

SIZES: 19-25

FEATURES: Neoprene upper, sturdy pimple sole, velcro closure, helps protect against sharp objects and hot sand.



BABY WRAP WETSUIT - 1946

SIZES: 0-6 MONTHS | 6-12 MONTHS

FEATURES: 2.5mm neoprene, opens flat with velcro fastenings, perfect for keeping our baby warmer for longer in the pool.



SUNSAFE 2 PIECE SET - 1948

SIZES: 1.5-2 YEARS | 2-3 YEARS | 3-4 YEARS

FEATURES: UPF 50+ protection, soft high stretch lycra for a comfortable fit, zip fastening for easy dressing, vest and shorts can be worn separately, machine washable on a cold wash.



BABY CHANGE MAT - 1949

SIZES: ONE SIZE

FEATURES: 415mm x 690mm, colourful neoprene, non slip rubber, velcro tab closure.



SUNSAFE BABY VEST - 1947

SIZES: 0-3 MONTHS | 3-6 MONTHS | 6-9 MONTHS | 9-12 MONTHS | 12-18 MONTHS

FEATURES: UPF 50+ protection, soft high stretch lycra for a comfortable fit, envelope fold neck for easy changing, plastic popper fastening, machine washable on a cold wash.



REUSABLE SWIM NAPPY - 1944

SIZES: 0-6 MONTHS | 6-12 MONTHS | 12-18 MONTHS | 18-24 MONTHS

FEATURES: 100% polyester, snug fit to prevent accidents, drawstring waist band for easy dressing, lightweight for comfort, machine washable & can be tumble dried.





FOOTWEAR

2.5mm thick, with a flexible rubber sole. These beach shoes will protect little feet against sharp objects & help with grip in slippery conditions.

SNAPPER

KIDS FOOTWEAR

SNAPPER BEACH SHOE - 1054

SIZES: 22 - 46



22 - 41



22 - 46



22 - 46

FEATURES:

- 100% 2.5mm neoprene upper
- Tough & sturdy rubber sole
- Pimple bottom tread for grip
- Toggle closure
- Helps protect against sharp objects & hot sand

WEEVER BEACH SHOE - 1053

SIZES: 22 - 46

WEEVER



Black/ black marl
22 - 46



Navy marl/ pink
36 - 42



Navy/ navy marl
36 - 46



Seashell/ navy
22 - 34



Shark/ blue
22 - 34

FEATURES:

- 100% 2.5mm neoprene upper
- Thick flexible rubber sole
- Durable extra grip thread
- Mesh drain panels
- Toggle closure
- Helps protect against sharp objects & hot sand



HOODS, GLOVES & BOOTS

3mm plus & double lined for durability, TWF cold water accessories will keep you warm for all year round water adventures.

3MM HOOD - 1024

SIZES: XSM | SML | MED | LGE | XLG

FEATURES: 3mm double lined neoprene, superstretch head panel, glued & blind stitched, glide skin seals.



3MM GLOVES - 1022

SIZES: 2XS | XSM | SML | MED | LGE | XLG

FEATURES: 3mm double lined neoprene, glued & blind stitched, diamond palm & finger grip, adjustable Velcro wrist straps, ergonomic design for comfort.



3MM SOCKS - 1019

SIZES: 2XS | XSM | SML | MED | LGE | XLG

FEATURES: 3mm neoprene, double lined for durability, flatlocked stitched for strength, free fit ankle for easy entry.



5MM SUPERSTRETCH HARD SOLED BOOTS - 1017

SIZES: 36 - 46

FEATURES: 5mm superstretch neoprene, blind stitched, bound ankle seam for durability, pull on style to prevent flushing, robust grip sole, toe & arch protection.



3MM AQUA ZIP BOOTS - 1018

SIZES: 28 - 46

FEATURES: 3mm neoprene, double lined for durability, cross stitch seams for strength, non-marking rubber sole, bound ankle, side zip entry.



BUOYANCY AIDS & LIFE JACKETS

TWF Buoyancy aids provide comfort and safety on the water. Durable and adjustable all life jackets meet rigorous EU safety standards.



50N 4 BUCKLE BUOYANCY AID - 1031

SIZES: SML (30-50kg) | MED (50-70kg) | LGE (70-90kg) | XLG (90+kg)

FEATURES: 50 newton rating conforms to EU safety standards, 4 adjustable straps, quick-release front buckles, high density foam, durable nylon outer.



50N FRONT ZIP BUOYANCY JACKET - 1030

SIZES: XSM/SML (30-50kg) | MED/LRG (50-70kg) | XLG/XXL (70+kg)

FEATURES: 50 newton rating conforms to EU safety standards, closed cell foam inner, 100% nylon outer, YKK heavy-duty front zipper, webbing belt with adjustable quick-release buckle, high fitting for maximum flexibility, front storage zip pocket.



100N LIFE JACKET - 1032

SIZES: KIDS 10-20kg | 30-40kg | 40-60kg | 60-79kg | 70-90kg

FEATURES: 100 newton rating conforms to EU safety standards, quick-release front buckles, bright orange for viability, adjustable straps, high density foam, durable nylon outer.



PET LIFE JACKET - 1033

SIZES: 0-5KG | 5-15KG | 15-20KG

FEATURES: Anatomically shaped for comfort, bright colours for high viable in the water, reflective stripes, adjustable straps, quick release buckles. Side pocket with zip.





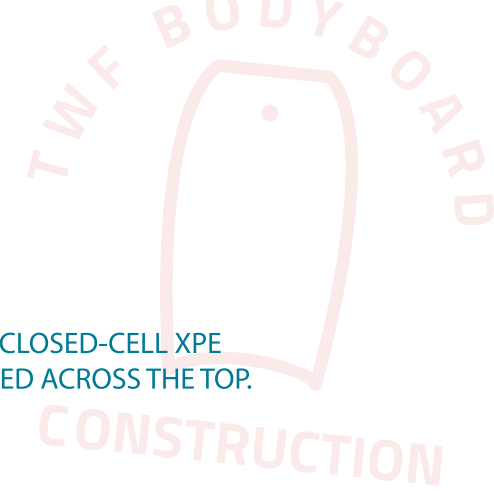
CONSTRUCTION



BODYBOARDS

TWF XPE bodyboards are durable, hard wearing & stronger than the traditional EPS beach boards, making them responsive, easy to manoeuvre and hard wearing.

TWF BODYBOARDS ARE BUILT USING SUPER LIGHT AND DURABLE MATERIAL.



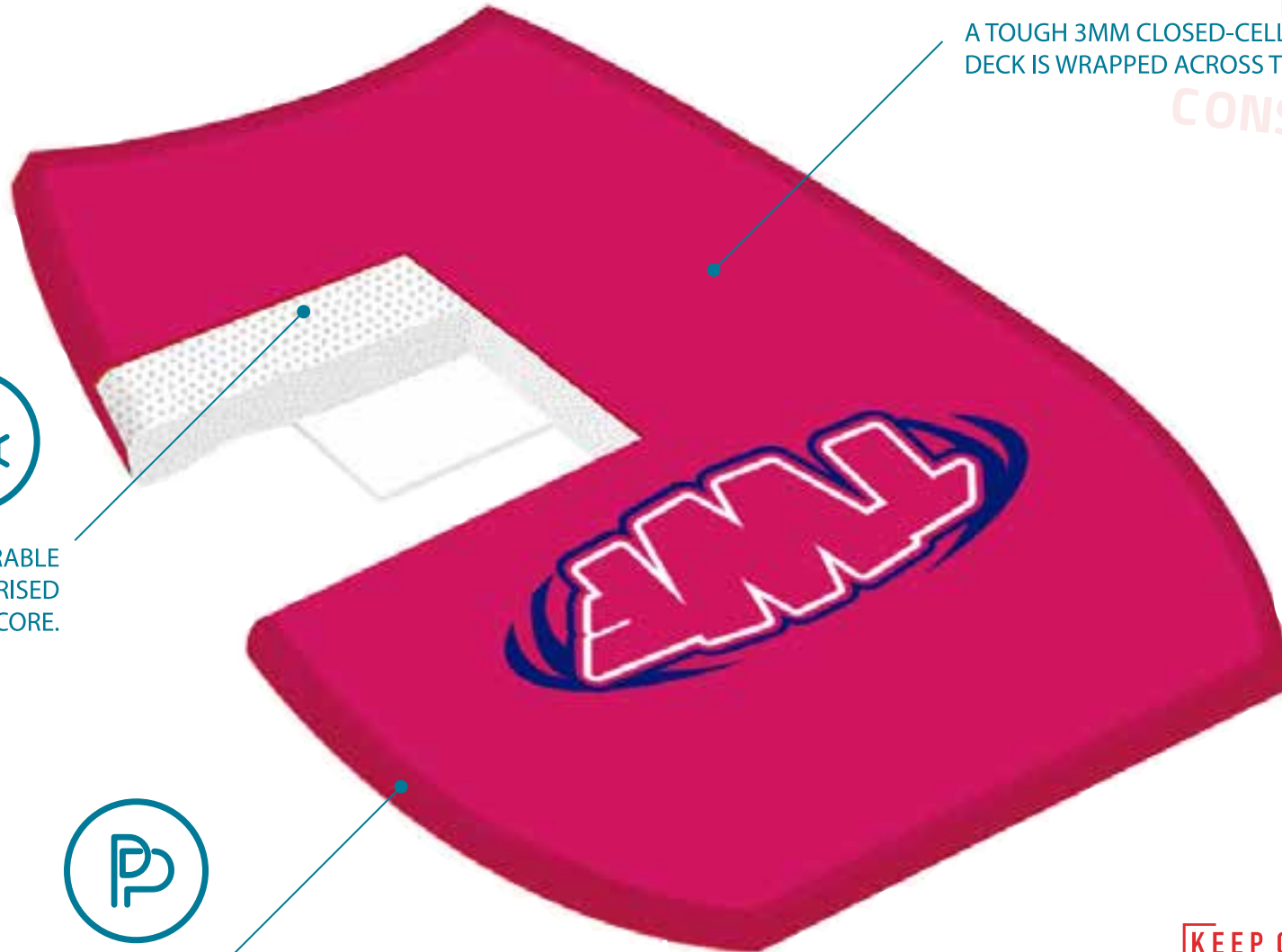
A TOUGH 3MM CLOSED-CELL XPE DECK IS WRAPPED ACROSS THE TOP.



STRONG AND DURABLE
HIGH DENSITY PRESSURISED
FOAM CORE.



A THICK 1MM XPE SLICK GIVES
EXTRA DURABILITY AND FLEX.



BODYBOARDS

KEEP OUR
BEACHES
CLEAN
TAKE ME HOME



XPE BODYBOARDS - 1038

SIZES: 33" | 37" | 42"

FEATURES: Ultra stiff with abs slick bottoms, leash included, glossy finished, assorted designs, pack of 6.

BODYBOARDS



TWF BODYBOARD BAG - 1040

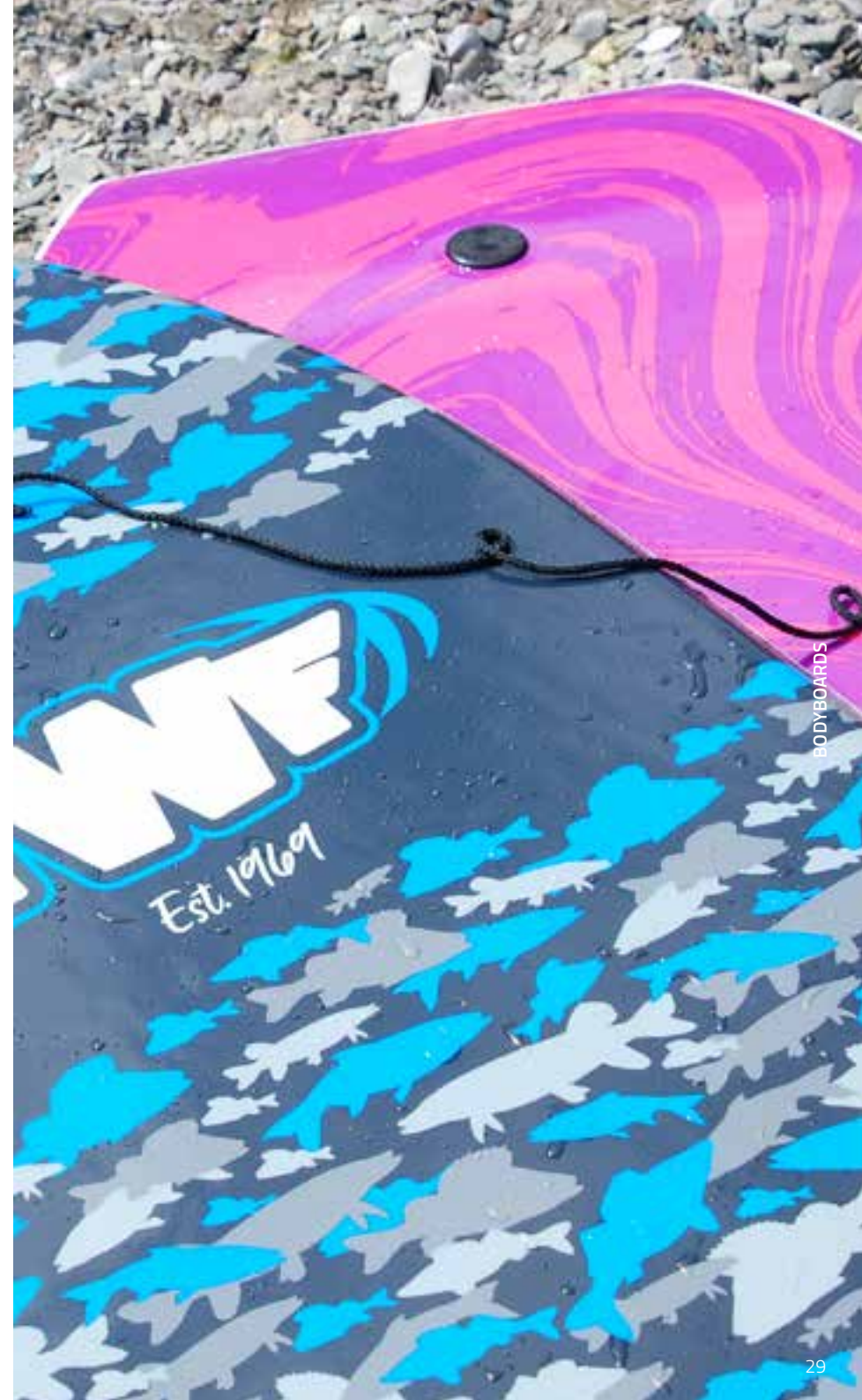
FEATURES: PU coated nylon padded shoulder straps, two board capacity.



SKIMBOARDS - 1039

SIZES: 37" | 42"

FEATURES: 3 ply lacquered Chinese maple, kicked up nose, frame made from polycarbonate, assorted designs, pack of 6.

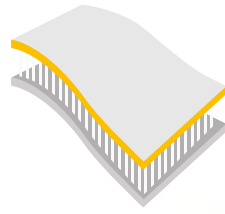




STAND-UP PADDLEBOARDS

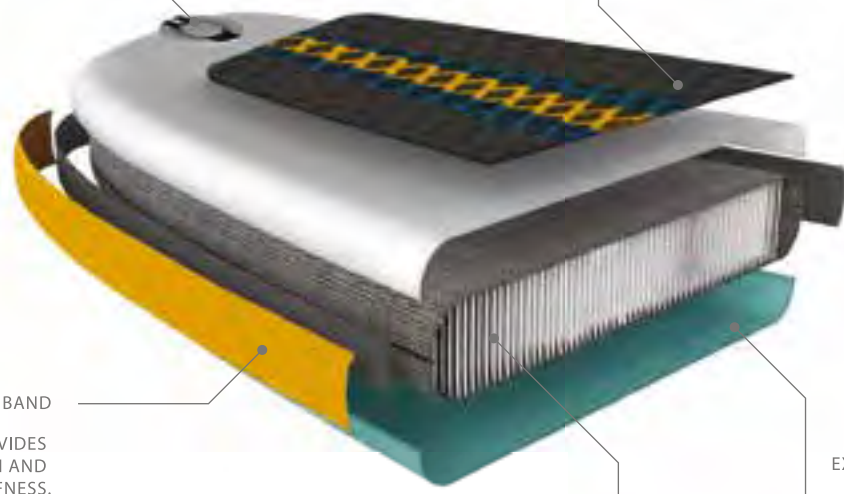


TWF FUSION
TWF FUSION TECHNOLOGY
DOUBLE LAMINATED, HOT PRESSED PVC. FUSED TOGETHER GIVING A THICKER BOARD, MAKING THE TWF SUP TOUGH AND DURABLE.



INFLATION VALVE
LOCKING ANTI-TWIST PUSH-PIN VALVE, WITH A STAINLESS STEEL D-RING FOR ATTACHING YOUR LEASH.

DIAMOND SKIN PAD
MACHINE-PRESSED DECKPAD TO ENSURE A PERFECT BOND. OUR SIGNATURE DIAMOND GROOVE PAD OFFERS TRACTION AND A COMFORTABLE GRIP.



DWF EXTERNAL RAIL BAND
THE FINAL SEAL PROVIDES EXTRA COMPRESSION AND INCREASED STIFFNESS.

DROPSTITCHED AIR CHAMBER
SUPER REINFORCED DROPSTITCHED PROVIDES STIFFNESS THROUGHOUT OUR BOARDS. INCREASED YARN DENSITY GIVES HIGH-TENSILE STRENGTH, WHICH CAN WITHSTAND PRESSURES OF 15PSI.

EXTRA THICK DWF PVC UNDERSIDE
A HIGH TENSILE COATING IS FUSED TO THE DROPSTITCH CORE.

SUPS
Tough and durable. Suitable for everyone to use in any conditions.



TWF SUP - 10'6-04

SIZES: 10' 6"

FEATURES: Length: 10'6 (320cm), Width: 30" (76cm)
Thickness: 6" (15cm), Volume: 270 Litres



CARRY HANDLE
LOW-PROFILE, ERGONOMIC
CARRY HANDLE.



FIN SET
TWO MOULD FINNS, PLUS ONE
FIN BOX (FIN INCLUDED).



INFLATION VALVE
LOCKED ANTI-TWIST PUSH-PIN
VALVE TECHNOLOGY.

TWF SUP
CONSTRUCTION



COLLAPSIBLE BEACH BUCKET - 1027

SIZES: 30L

FEATURES: Diameter 38 x hight 28cm. Touch waterproof fabric. Welded seams. Multi purpose. Collapsible when not in use.



BABY HOODED SWIM TOWEL - 1830

SIZES: 60 x 70cm

FEATURES: Lightweight microfibre.



TWF LARGE BEACH TOWEL - 1029

SIZES: 75 x 150cm

FEATURES: Large towel, 100% cotton velour



BEACH BUCKET
Tough and durable. Essential for a perfect day at the beach.

TWF KIDS HOODED TOWEL ROBE - 1829

SIZES: 60 x 70cm

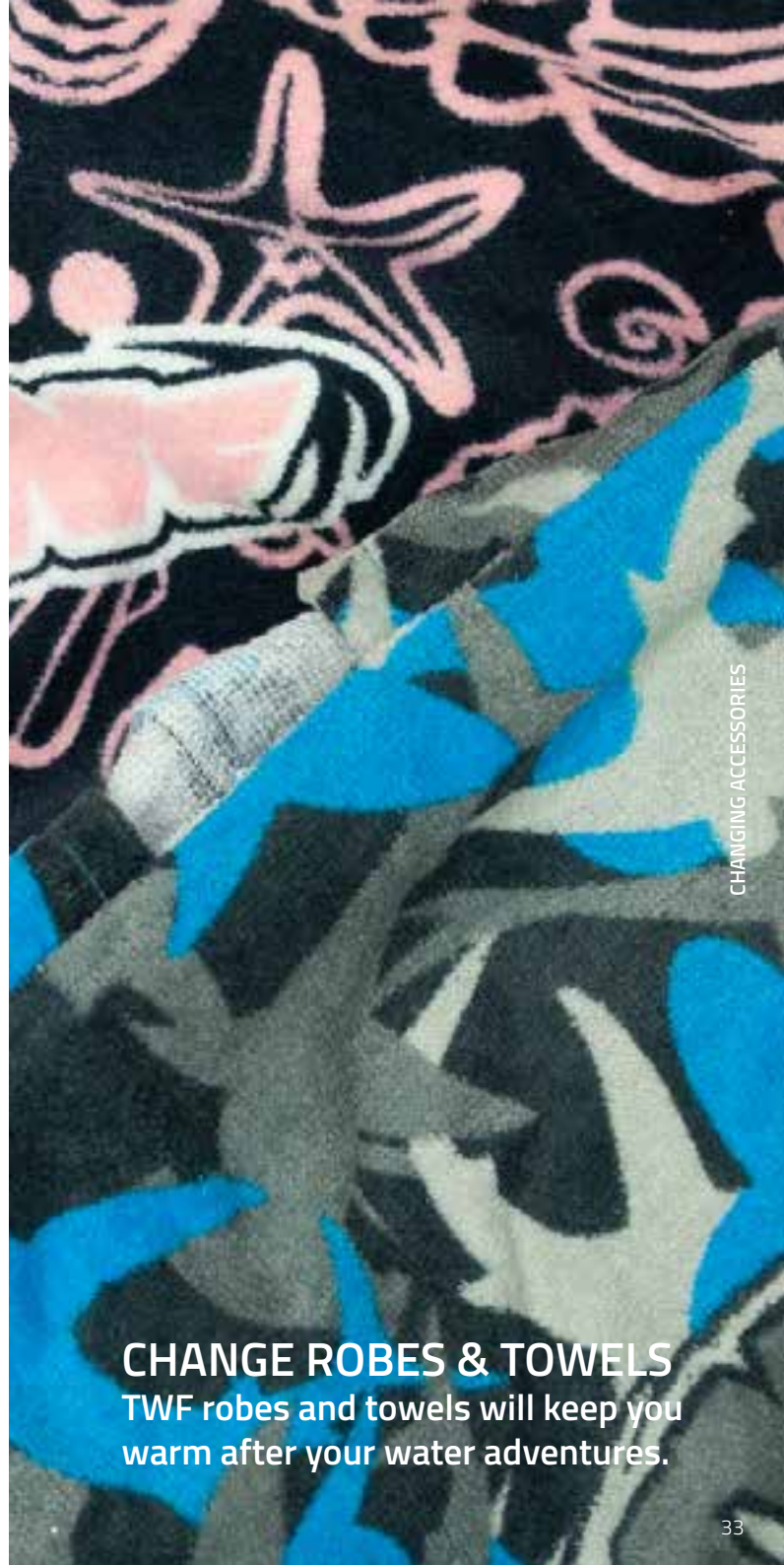
FEATURES: 100% cotton velour with hood and arm holes, 70cm from shoulder to hem.



Navy/ Sharks



Seashells



CHANGING ACCESSORIES

CHANGE ROBES & TOWELS
TWF robes and towels will keep you warm after your water adventures.

MASK, SNORKEL & FINS

Comfortable to wear & easy to adjust
helping you explore what's below.

KIDS MASK & SNORKEL SET - 1026

SIZES: SML-MED (9-13) | LRG-XLG (1-3)

FEATURES: Hardened tempered safety glass, mask skirt & strap made from anti-allergic PVC, made from polycarbonate, adjustable, saltwater resistant strap, saltwater resistant, flexible snorkel tube with purge valve, PVC material (phthalate free), integrated strap holder for mask attachment, anatomically-formulated mouthpiece, made from anti-allergic PVC.



KIDS ADJUSTABLE FINS - 1026

SIZES: SML-MED (9-13) | LRG-XLG (1-3)

FEATURES: Open heel fins for a comfortable fit, quality materials for high performance, balanced flexibility delivers powerful propulsion with less effort, easy adjust with quick-release buckle, vented blade preventing water being retained inside foot pocket.



SIZE CHART

MENS

CODE	HEIGHT (FT)	CHEST (INCH)	CHEST (CM)	WAIST (INCH/CM)
SML	5'3" - 5'5"	34 - 36	86 - 91	30" / 76
MED	5'6" - 5'8"	36 - 38	91 - 97	32" / 81
MTL	5'10" - 6'0"	36 - 38	91 - 97	32" / 81
MLG	5'8" - 5'10"	38 - 40	97 - 102	34" / 86
LGE	5'10" - 6'0"	40 - 42	102 - 107	36" / 91
XLG	6'0" - 6'2"	42 - 44	107 - 112	38" / 96
XXL	6'2" - 6'4"	44 - 46	112 - 117	40" / 101
3XL	6'4"+	46 - 48	117 - 122	42" / 106

KIDS

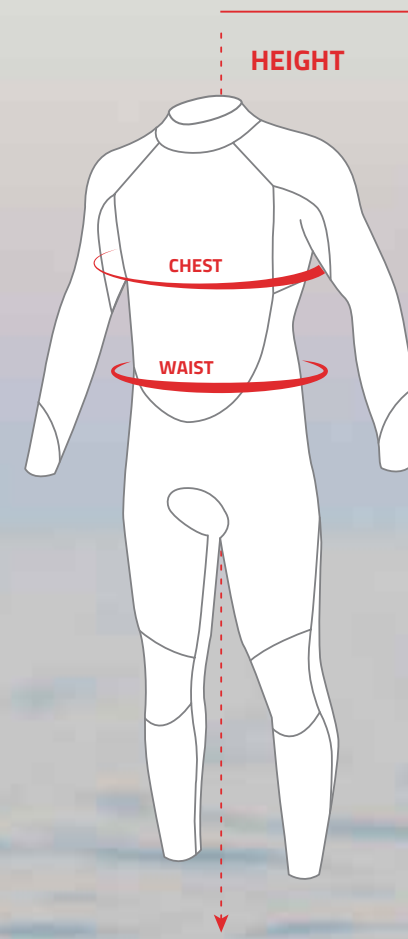
CODE	AGE	CHEST (INCH)	CHEST (CM)	NECK TO CROTCH
K02	1-2	20.5	52	14/36
K03	2-3	21.5	54	15/38
K04	3-4	22	56	16/40
K06	4-6	23	58	16.5/42
K07	6-7	24.5	62	17/44
K08	7-8	25	64	18/46
K09	8-9	27	68	19/49
K11	10-11	28.5	72	20.5/52
K12	11-12	30.5	77	21/54
K13	12-13	31.5	80	21.5/55
K15	14-15	33.5	85	22/56

LADIES

CODE	BUST (INCH)	BUST (CM)	WAIST (INCH)	WAIST (CM)
8	36.5	93	32.5	83
10	38	97	34	86
12	40	101	36	91
12/14	40.5	102.5	37	93
14	41	104	37.5	95
16	43	109	38.5	98
18	44	112	40	102
20	46	116	42	106
22	47.5	120	43.5	110
24	49	124	45	114

WETSHOES

CODE	UK SIZE	EU SIZE	CODE	UK SIZE	EU SIZE
022	4	22	034	2	34
023	5	23	036	3	36
024	6	24	037	4	37
025	7	25	038	5	38
026	8	26	040	6	40
027	9	27	041	7	41
028	10	28	042	8	42
029	11	29	043	9	43
030	12	30	044	10	44
031	13	31	045	11	45
033	1	33	046	12	46






STAY IN TOUCH

ADDRESS:

**TWF International LTD,
Moorswater Industrial Estate,
Liskeard, Cornwall,
PL14 4LN,
UK**

 **SALES@THEWETSUITFACTORY.CO.UK**

 **TRADEWETSUITS.COM**

 **+44 (0) 1579 340 100**



@TWFINTERNATIONALLTD



**OPEN YOUR PHONE
CAMERA & SCAN ME.**

**OR GO TO
TRADEWETSUITS.COM**

