



TWF

TWF INTERNATIONAL LTD

SUMMER 2021



CONTENTS

TWF WETSUITS

MENS XT3	4-5
LADIES XT3	6-7
KIDS XT3	8-11
TWF MAUSERED FULLSUIT	12-13

TURBO WETSUITS

MENS	15
LADIES	16
KIDS	17

KIDS SHORTIES

PIRATE & SEAHORSE	18-19
-------------------	-------

RASH VESTS	20-21
------------	-------

TWF BABY & TODDLER RANGE	22-23
--------------------------	-------

FOOTWEAR	24-25
----------	-------

LIFE JACKETS & BUOYANCY AIDS	26
------------------------------	----

ACCESSORIES	27
-------------	----

BODYBOARDS AND SKIMBOARDS	28-29
---------------------------	-------

MASKS, SNORKELS AND FINS	30
--------------------------	----

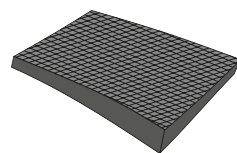
TOWELS	31
--------	----

SIZE GUIDE	BACK PAGE
------------	-----------

TWF International Ltd has been supplying wetsuits and beach accessories from Cornwall since 1969. With 50 years of experience in manufacturing and designing wetsuits TWF have developed a high quality range of summer wetsuits, rash vests, baby wetsuits & accessories as well as variety of footwear and bodyboards.

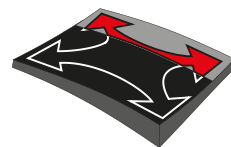


MATERIALS



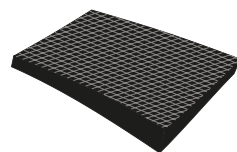
MESH CHEST PANEL

Durable textured skin finish on the surface of the neoprene for reduced wind chill.



SUPERSTRETCH FABRIC

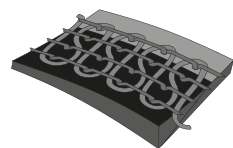
4-way superstretch material in the shoulder areas allow greater freedom of movement during action watersports like surfing, kayaking, sailing and bodyboarding.



DURATEX KNEES

Durable textured double knit nylon which stretches as you move and protects the knees from knocks and scuffs against hard surfaces.

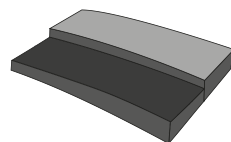
CONSTRUCTION



FLATLOCKED SEAMS

Flatlock is a strong, comfortable, flat stitch. Formed by overlapping the neoprene and stitching the two pieces together.

NEOPRENE THICKNESS/TYPE



3/2mm ULTRALIGHT FOAM

TWF uses a combination of multiple thickness Ultralight neoprene for increased flexibility and warmth in crucial areas



TWF XT3



Mens

3mm thick, polyester and nylon lined, mesh chest and back panels (to prevent windchill) and an adjustable collar. This suit is a great durable all-rounder. The ample thickness and mesh panels make this wetsuit suitable for use from Spring to Autumn. The super-stretch shoulders and sleeves enable freedom of movement in all water-based activities. Provides maximum UV protection..



**TWF XT3 3MM
MENS FULLSUIT**
CODE: 1910

SIZES: SML MED MTL MLG
LGE XLG XXL 3XL



BLACK - 20



BLUE - 21



RED - 22



BLACK - 20



BLUE - 21

RED - 22

**TWF XT3 3MM
MENS SHORTIE**
CODE: 1911

SIZES: SML MED MLG LGE XLG XXL 3XL

FEATURES:

- 100% TITANIUM FLATLOCKED STITCHING FOR COMFORT.
- SUPERLITE ULTRA STRETCH SLEEVES.
- MESH CHEST PANEL REDUCES WINDCHILL.
- SUPERLITE ULTRA STRETCH BACK PANEL.
- GLIDE SKIN ADJUSTABLE COLLAR SYSTEM.
- NON-CORROSIVE PK ZIPPER & VELCRO ZIP LOCK.
- DURATEX STRETCH KNEE PADS.
- NO UNDERARM SEAMS.
- PRE-BENT KNEES & ELBOWS.
- FREE FIT ANKLES WITH RAW EDGES.
- NEW DENSITY NEOPRENE FOR MAXIMUM WEAR.
- CERTIFIED UPF 50+ MAXIMUM UV PROTECTION.
- COLOUR CO-ORDINATED STITCHING.

TWF XT3



Ladies

3mm thick, polyester and nylon lined, mesh chest and back panels (to prevent windchill) and an adjustable collar. This suit is a great durable all-rounder. The ample thickness and mesh panels make this wetsuit suitable for use from Spring to Autumn. The super-stretch shoulders and sleeves enable freedom of movement in all water-based activities. Provides maximum UV protection.



EST. 1969

XT3

TWF XT3 3MM LADIES FULLSUIT CODE: 1910

SIZES: 08 10 12 12/14 14 16 18 20 22



TWF XT3 3MM LADIES SHORTIE CODE: 1911

SIZES: 08 10 12 12/14 14 16 18 20 22

FEATURES:

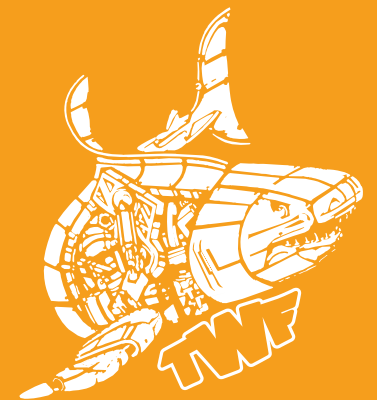
- 100% TITANIUM FLATLOCKED STITCHING FOR COMFORT.
- SUPERLITE ULTRA STRETCH SLEEVES.
- MESH CHEST PANEL REDUCES WINDCHILL.
- SUPERLITE ULTRA STRETCH BACK PANEL.
- GLIDE SKIN ADJUSTABLE COLLAR SYSTEM.
- NON-CORROSIVE PK ZIPPER & VELCRO ZIP LOCK.
- DURATEX STRETCH KNEE PADS.
- NO UNDERARM SEAMS.
- PRE-BENT KNEES & ELBOWS.
- FREE FIT ANKLES WITH RAW EDGES.
- NEW DENSITY NEOPRENE FOR MAXIMUM WEAR.
- CERTIFIED UPF 50+ MAXIMUM UV PROTECTION.
- COLOUR CO-ORDINATED STITCHING.

TWF XT3



Kids

3mm thick, polyester and nylon lined, mesh chest and back panels (to prevent windchill) and an adjustable collar. This suit is a great durable all-rounder. The ample thickness and mesh panels make this wetsuit suitable for use from Spring to Autumn. The super-stretch shoulders and sleeves enable freedom of movement in all water-based activities. Provides maximum UV protection.



XT3

TWF XT3 3MM KIDS FULLSUIT CODE: 1910

SIZES: K03, K04, K06, K07,
K08, K09, K11, K12, K13, K15



CAMO - 21



AMBER - 23



PINK - 25



FINS - 20



LIME - 29



RED - 22

FEATURES:

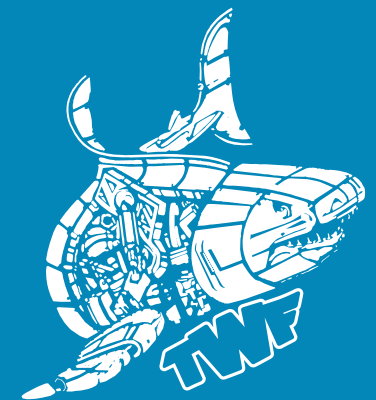
- 100% TITANIUM FLATLOCKED STITCHING FOR COMFORT.
- SUPERLITE ULTRA STRETCH SLEEVES.
- MESH CHEST PANEL REDUCES WINDCHILL.
- SUPERLITE ULTRA STRETCH BACK PANEL.
- GLIDE SKIN ADJUSTABLE COLLAR SYSTEM.
- NON-CORROSIVE PK ZIPPER & VELCRO ZIP LOCK.
- DURATEX STRETCH KNEE PADS.
- NO UNDERARM SEAMS.
- PRE-BENT KNEES & ELBOWS.
- FREE FIT ANKLES WITH RAW EDGES.
- NEW DENSITY NEOPRENE FOR MAXIMUM WEAR.
- CERTIFIED UPF 50+ MAXIMUM UV PROTECTION.
- COLOUR CO-ORDINATED STITCHING.

TWF XT3



Kids

3mm thick, polyester and nylon lined, mesh chest and back panels (to prevent windchill) and an adjustable collar. This suit is a great durable all-rounder. The ample thickness and mesh panels make this wetsuit suitable for use from Spring to Autumn. The super-stretch shoulders and sleeves enable freedom of movement in all water-based activities. Provides maximum UV protection.



XT3



PINK - 25



LIME - 29



RED - 22



FINS - 20



CAMO - 21



AMBER - 23

TWF XT3 3MM KIDS SHORTIE CODE: 1911

SIZES: K02, K03, K04, K06, K07,
K08, K09, K11, K12, K13, K15

FEATURES:

- 100% TITANIUM FLATLOCKED STITCHING FOR COMFORT.
- SUPERLITE ULTRA STRETCH SLEEVES.
- MESH CHEST PANEL REDUCES WINDCHILL.
- SUPERLITE ULTRA STRETCH BACK PANEL.
- GLIDE SKIN ADJUSTABLE COLLAR SYSTEM.
- NON-CORROSIVE PK ZIPPER & VELCRO ZIP LOCK.
- NO UNDERARM SEAMS.
- NEW DENSITY NEOPRENE FOR MAXIMUM WEAR.
- CERTIFIED UPF 50+ MAXIMUM UV PROTECTION.
- COLOUR CO-ORDINATED STITCHING.



MAUSERED FULLSUIT 5/4/3

Combination 5,4 & 3mm double lined neoprene with mausered stitching throughout. The enhanced thickness makes this wetsuit suitable for year-round use in cold water conditions. Mausered stitching is the strongest wetsuit seam available, providing a comfortable yet highly durable construction.



TWF MAUSERED 5/4/3 FULLSUIT

CODE: 1410

ADULT SIZES: SML MED LGE XLG XXL

KIDS SIZES: K09 K11 K12 K13 K15

FEATURES:

- 5MM TORSO, 4MM LEGS AND LOWER BODY, 3MM ARMS & SIDE PANELS.
- 100% MAUSERED STITCHING WITH STRETCH TAPE FOR DURABILITY & COMFORT.
- ALL NYLON DOUBLE LINED NEOPRENE FOR MAXIMUM WEAR.
- ADJUSTABLE COLLAR SYSTEM .
- NON-CORROSIVE PK ZIPPER & VELCRO ZIP LOCK.
- DURATEX STRETCH KNEE PADS.
- NO UNDERARM SEAMS.
- PRE-BENT KNEES & ELBOWS.
- FREE FIT ANKLES WITH RAW EDGES.
- CERTIFIED UPF 50+ MAXIMUM UV PROTECTION.





TURBO



2.5mm thick, polyester-lined, large mesh panels on chest and back to prevent windchill. The Turbo has sufficient thickness to make it an ideal wetsuit for the whole summer season. Great for general watersports use providing maximum UV protection.



GREEN - 09

RED - 02

BLUE - 01

BLACK - 00

TURBO 2.5MM MENS SHORTIE

CODE: 1511

SIZES: SML MED LGM LGE XLG XXL 3XL

FEATURES:

- 2.5MM NEOPRENE.
- MESH CHEST & BACK PANEL REDUCES WINDCHILL.
- FLATLOCKED STITCHING.
- YKK ZIP WITH METAL SLIDER & VELCRO ZIP LOCK.
- DURABLE KNEE PADS.
- NO UNDERARM SEAMS.
- FREE FIT ANKLES WITH RAW EDGES.
- NEW DENSITY NEOPRENE FOR MAXIMUM WEAR.
- CERTIFIED UPF 50+ MAXIMUM UV PROTECTION.

TURBO 2.5MM MENS FULLSUIT

CODE: 1510

SIZES: SML MED LGM LGE XLG XXL 3XL



**TURBO 2.5MM
LADIES FULLSUIT**

CODE: 1510

SIZES: 08 10 12 14 16 18 20 22

**TURBO 2.5MM
LADIES SHORTIE**

CODE: 1511

SIZES: 08 10 12 14 16 18 20 22

FEATURES:

- 2.5MM NEOPRENE.
- MESH CHEST & BACK PANEL REDUCES WIND-CHILL.
- FLATLOCKED STITCHING.
- YKK ZIP WITH METAL SLIDER & VELCRO ZIP LOCK.
- DURABLE KNEE PADS.
- NO UNDERARM SEAMS.
- FREE FIT ANKLES WITH RAW EDGES.
- NEW DENSITY NEOPRENE FOR MAXIMUM WEAR.
- CERTIFIED UPF 50+ MAXIMUM UV PROTECTION.



FLO PINK - 05



BLUE - 01



BLACK - 00





**TURBO 2.5MM
KIDS SHORTIE**
CODE: 1511

SIZES: K02 K03 K04 K06 K07 K08
K09 K11 K12 K13 K15



BLUE - 01

RED - 02

YELLOW 04

FLO PINK - 05

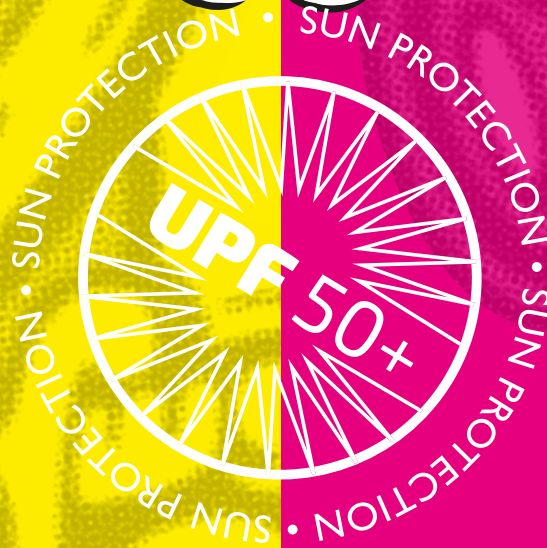
GREEN - 09

FEATURES:

- FOR BEACH & SEA USE.
- 2.5MM NEOPRENE.
- MESH CHEST & BACK PANEL REDUCES WIND-CHILL.
- FLATLOCKED STITCHING.
- YKK ZIP WITH METAL SLIDER & VELCRO ZIP LOCK.
- DURABLE KNEE PADS.
- NO UNDERARM SEAMS.
- FREE FIT ANKLES WITH RAW EDGES.
- NEW DENSITY NEOPRENE FOR MAXIMUM WEAR.
- CERTIFIED UPF 50+ MAXIMUM UV PROTECTION.

**TURBO 2.5MM
KIDS FULLSUIT**
CODE: 1510

SIZES: K03 K04 K06 K07 K08
K09 K11 K12 K13 K15



KIDS SUMMER SHORTIES

2mm thick, polyester lined. Ideal for high summer paddling & dipping with maximum UV & windchill protection.

**PIRATE & SEAHORSE
2MM KIDS SUMMER
SHORTIE WETSUIT
(AGES 2-10)
CODE:1811**



BLUE - 08



LILAC - 07



FLO PINK - 05



BLUE - 01



GREEN - 09



YELLOW - 04



RED - 02

FEATURES:

- FOR BEACH & SEA USE.
- 2MM NEOPRENE.
- FLATLOCKED STITCHING.
- ZIP WITH PLASTIC SLIDER & VELCRO ZIP LOCK.
- NO UNDERARM SEAMS.
- UPF 50+.
- NEW DENSITY NEOPRENE FOR MAXIMUM WEAR.

	00	0	1	2	3	4	5
CODE	K02	K03	K04	K06	K08	K09	K10
AGE	1-2yrs	2-3yrs	3-4yrs	5-6yrs	7-8yrs	8-9yrs	9-10yrs
CHEST	51	54	57	63	64	69	75



TWF RASH VEST

The TWF short sleeve rash vest provides constant UPF protection & features a high collar to keep the sun off your neck. Wear the rash vest under a wetsuit to give added comfort and protection against irritation.

Used with a wetsuit, the rash vest also adds a layer of insulation to help keep you warmer in the water for longer. It is made from high-stretch Lycra for breathability & has been constructed with Raglan sleeves to reduce seams & increase protection.

The rash vest comes in unisex sizes.



ADULTS SHORT SLEEVE RASH VEST

CODE: 1914

SIZES: SML MED LGE XLG XXL

BLACK/CHARCOAL - 00



BLACK/RED - 02



NAVY/GREEN - 01



NAVY/PINK - 05



ADULTS SHORT SLEEVE RASH VEST

CODE: 1714

SIZES: XSM SML MED LGE XLG XXL

**AVAILABLE WITH
YOUR OWN LOGO**

- TRADE ONLY



KIDS SHORT SLEEVE RASH VEST

CODE: 1914

SIZES: JSM, JMD, JLG, JXL

BLACK/ORANGE - 00



NAVY/GREEN - 01



BLACK/RED - 02



NAVY/PINK - 05



KIDS SIZES - APPROX AGE

JSM 4-7 YRS

JMD 8-9 YRS

JLG 10-12 YRS

JXL 13-15 YRS

FEATURES:

- RAGLAN SLEEVES.
- HIGH STRETCH LYCRA.
- USE UNDER ANY WETSUIT.
- USE AS A SUN PROTECTOR.
- UPF PROTECTION .



BABY & TODDLER RANGE



TWF SWIM NAPPY COVER

CODE: 1945

SIZES: 0-3 MONTHS, 3-6 MONTHS,
6-9 MONTHS, 9-12 MONTHS, 12-18 MONTHS

FEATURES:

- SOFT LIGHTWEIGHT NEOPRENE.
- POLYESTER LYCRA HEMS.
- STRETCHY FABRIC FOR SNUG FIT.
- PROVIDES EXTRA PROTECTION TO SWIM NAPPY.
- COMPLIES WITH THE DOUBLE NAPPY POLICY.
- MACHINE WASHABLE ON A COLD WASH.



TWF BABY WRAP WETSUIT

CODE: 1946
SIZES:
0-6 MONTHS
6-12 MONTHS

FEATURES:

- 2.5MM NEOPRENE.
- OPENS FLAT WITH VELCRO FASTENINGS.
- PERFECT FOR KEEPING BABY WARMER FOR LONGER IN THE POOL.



TWF VELCRO WETSHOES

CODE: 1950
SIZES: 19-25

FEATURES:

- NEOPRENE UPPER.
- STURDY PIMPLE SOLE.
- VELCRO CLOSURE.
- HELPS PROTECT AGAINST SHARP OBJECTS AND HOT SAND.

KIT BAG

CODE: 1800
ONE SIZE



SUNSAFE 2 PIECE SET

CODE: 1948

SIZES:

- 1.5-2 YEARS
- 2-3 YEARS
- 3-4 YEARS



FEATURES:

- UPF 50+ PROTECTION.
- SOFT HIGH STRETCH LYCRA FOR A COMFORTABLE FIT.
- ZIP FASTENING FOR EASY DRESSING.
- VEST AND SHORTS CAN BE WORN SEPARATELY.
- MACHINE WASHABLE ON A COLD WASH.

SUNSAFE BABY VEST

CODE: 1947

SIZES:

- 0-3 MONTHS
- 3-6 MONTHS
- 6-9 MONTHS
- 9-12 MONTHS
- 12-18 MONTHS



FEATURES:

- UPF 50+ PROTECTION.
- SOFT HIGH STRETCH LYCRA FOR A COMFORTABLE FIT.
- ENVELOPE FOLD NECK FOR EASY CHANGE.
- PLASTIC POPPER FASTENING.
- MACHINE WASHABLE ON A COLD WASH.

TWF REUSABLE

SWIM NAPPY

CODE: 1944

SIZES:

- 0-6 MONTHS
- 6-12 MONTHS
- 12-18 MONTHS
- 18-24 MONTHS



FEATURES:

- 100% POLYESTER. SNUG FIT TO PREVENT ACCIDENTS ESCAPING.
- DRAWSTRING WAIST BAND FOR EASY DRESSING.
- LIGHTWEIGHT FOR COMFORT.
- MACHINE WASHABLE & CAN BE TUMBLE DRIED.



TWF BABY CHANGE MAT

CODE: 1949

SIZES: ONE SIZE

- 415MM X 690MM.
- COLOURFUL NEOPRENE.
- NON SLIP RUBBER UNDERSIDE.
- VELCRO TAB CLOSURE.



SHARKIES

SHARKIES
CODE: 1058
 SIZES: 22 - 45

FEATURES:

- HOLES FOR VENTALATION & DRAINAGE.
- PREMIUM EVA FORMULA.
- ROBUST CONSTRUCTION WITH WELDED STUDS.
- HEEL STRAP FOR COMFORTABLE FIT.
- DURABLE NON MARKING SOLE.
- VERSATILE MULTI-USE SANDAL.



SNAPPER



22-41



22-46



22-46

SNAPPER BEACH SHOE

CODE: 1054
 SIZES: 22-46

FEATURES:

- 100% 2.5 MM NEOPRENE UPPER.
- TOUGH & STURDY RUBBER SOLE.
- PIMPLE BOTTOM TREAD FOR GRIP.
- TOGGLE CLOSURE.
- HELPS PROTECT AGAINST SHARP OBJECTS & SAND.

WEEVER



40-46



29-38



22-28



40-46



22-38

WEEVER BEACH SHOE

CODE: 1053

SIZES: 22-46

FEATURES:

- 100% 2.5 MM NEOPRENE UPPER.
- THICK FLEXIBLE RUBBER SOLE.
- DURABLE EXTRA GRIP TREAD.
- MESH DRAIN PANELS.
- TOGGLE CLOSURE.
- HELPS PROTECT AGAINST SHARP OBJECTS & HOT SAND.



37-42



22-36

TWF VELCRO WETSHOES

CODE: 1950

SIZES: 19-25

FEATURES:

- NEOPRENE UPPER.
- STURDY PIMPLE SOLE.
- VELCRO CLOSURE.
- HELPS PROTECT AGAINST SHARP OBJECTS & HOT SAND.





BUOYANCY AIDS & LIFE JACKETS

TWF 50N 4 BUCKLE BUOYANCY AID

CODE: 1031
SML/30-50kg
MED/50-70kg
LGE/70-90kg
XLG/90+kg

FEATURES:

- 50 NEWTON RATING CONFORMS TO E.U. SAFETY STANDARDS.
- 4 ADJUSTABLE STRAPS.
- QUICK-RELEASE FRONT BUCKLES.
- HIGH DENSITY FOAM.
- DURABLE NYLON OUTER.



PET LIFE JACKET

CODE: 1033
SIZES: 0-5KG, 5-15KG, 15-20KG

FEATURES:

- ANATOMICALLY SHAPED FOR COMFORT.
- BRIGHT COLOURS, HIGHLY VISIBLE IN THE WATER.
- REFLECTIVE STRIPES.
- ADJUSTABLE STRAPS.
- QUICK RELEASE BUCKLES.



TWF 50N FRONT ZIP BUOYANCY JACKET

CODE: 1030
XSM/SML-30/50KG
MED/LGE - 50-70KG
XLG-XXL - 70KG+

FEATURES:

- 50 NEWTON RATING CONFORMS TO E.U. SAFETY STANDARDS
- CLOSED CELL FOAM INNER
- 100% NYLON OUTER
- YKK HEAVY-DUTY FRONT ZIPPER
- WEBBING BELT WITH ADJUSTABLE QUICK-RELEASE BUCKLE
- HIGH-FITTING FOR MAXIMUM FLEXIBILITY
- FRONT STORAGE ZIP POCKET

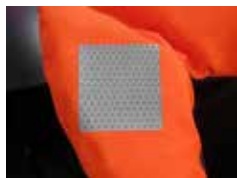


100N LIFE JACKET

CODE: 1032
KIDS SIZES: 10-20KG,
20-30KG ADULT SIZES:
30-40KG, 40-60KG,
60-79KG, 70-90KG

FEATURES:

- BRIGHT ORANGE FOR VISIBILITY.
- REFLECTIVE COLLAR & CHEST PANELS.
- QUICK-RELEASE FRONT BUCKLE .
- ADJUSTABLE LEG-STRAPS (SIZES 10-20 & 20-30 ONLY).
- HIGH DENSITY FOAM WITH NYLON OUTER.
- 100 NEWTON RATING CONFORMS TO E.U. SAFETY STANDARDS.





HOODS, GLOVES & BOOTS

TWF 3MM HOOD

CODE: 1024

SIZES: XSM, SML,
MED, LGE, XLG

FEATURES:

- 3MM DOUBLE LINED NEOPRENE.
- SUPERSTRETCH HEAD PANEL.
- GLUED & BLIND STITCHED.
- GLIDE SKIN SEALS.



TWF 3MM GLOVES

CODE: 1022

SIZES: 2XS, XSM,
SML, MED, LGE, XLG

FEATURES:

- 3MM DOUBLE LINED NEOPRENE.
- GLUED & BLIND STITCHED.
- DIAMOND PALM & FINGER GRIP.
- ADJUSTABLE VELCRO WRIST STRAPS.
- ERGONOMIC DESIGN FOR COMFORT.



5MM SUPERSTRETCH HARD SOLED BOOTS

CODE: 1017

SIZES: 36-46

FEATURES:

- 5MM SUPERSTRETCH NEOPRENE.
- BLIND STITCHED.
- BOUND ANKLE SEAM FOR DURABILITY.
- PULL ON STYLE TO PREVENT FLUSHING.
- ROBUST GRIP SOLE.
- TOE & ARCH PROTECTION.



TWF 3MM SOCKS

CODE: 1019

SIZES: 2XS, XSM,
SML, MED, LGE, XLG

FEATURES:

- 3MM NEOPRENE.
- DOUBLE LINED FOR DURABILITY.
- FLATLOCK STITCHED FOR STRENGTH.
- FREE FIT ANKLE FOR EASY ENTRY.



3MM AQUA ZIP BOOTS

CODE: 1018

SIZES: 28-46

FEATURES:

- 3MM NEOPRENE.
- DOUBLE LINED FOR DURABILITY.
- CROSS STITCH SEAMS FOR STRENGTH.
- NON-MARKING RUBBER SOLE.
- BOUND ANKLE.
- SIDE ZIP ENTRY.





BODYBOARDS

XPE BODYBOARDS

CODE: 1038
33", 37" AND 42"

FEATURES:
ULTRA STIFF WITH ABS SLICK
BOTTOMS.
LEASH INCLUDED.
ASSORTED DESIGNS.
PACK OF 6

TOP



BOTTOM





TWF BODYBOARD BAG

CODE: 1040

PU COATED NYLON
PADDED SHOULDER STRAPS

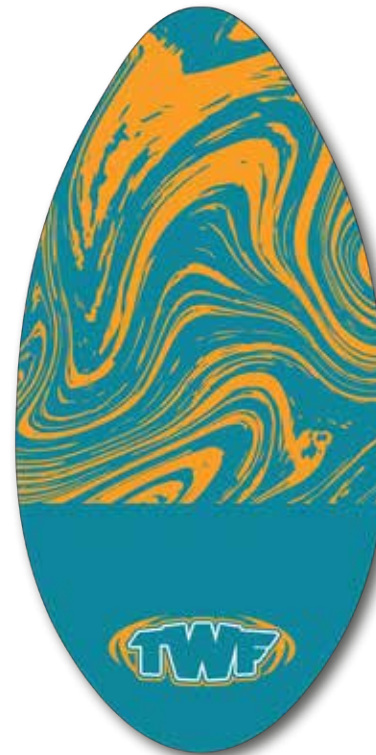
CAPACITY= 

SKIMBOARDS

CODE: 1039

FEATURES:

- 6 PLY LACQUERED CHINESE MAPLE
- KICKED UP NOSE
- FRAME MADE OF POLYCARBONATE.
- 37" AND 42" LENGTH
- ASSORTED DESIGNS
- PACK OF 6, 2 PURPLE, 2 BLUE, 2 NAVY



KIDS ADJUSTABLE FINS

CODE: 1026

SIZES: SML-MED (9-13)

LGE-XLG (1-3)

FEATURES:

- OPEN HEEL FINS FOR A COMFORTABLE FIT.
- QUALITY MATERIALS FOR HIGH PERFORMANCE.
- BALANCED FLEXIBILITY DELIVERS POWERFUL PROPULSION WITH LESS POWER.
- EASY ADJUST WITH QUICK-RELEASE BUCKLE.
- VENTED BLADE PREVENTING WATER BEING RETAINED INSIDE FOOT POCKET.



KIDS MASK & SNORKEL SET

CODE: 1026

FEATURES:

- HARDENED TEMPERED SAFETY GLASS.
- MASK SKIRT & STRAP MADE OF ANTI-ALLERGIC PVC.
- FRAME MADE OF POLYCARBONATE.
- ADJUSTABLE, SALTWATER RESISTANT STRAP.
- SALTWATER RESISTANT.
- FLEXIBLE SNORKEL TUBE WITH PURGE VALVE.
- PVC MATERIAL (PHTHALATE FREE).
- INTERGRATED STRAP HOLDER FOR MASK ATTACHEMENT.
- ANATOMICALLY-FORMULATED MOUTHPIECE, MADE FROM ANTI-ALLERGIC PVC.

CHANGE ROBES & TOWELS



NARWHAL 08



FISH CAMO - 02

TWF KIDS HOODED TOWEL ROBE

CODE: 1829
SIZES: 60 X 70CM
COLOURS: NARWHAL, FISH CAMO

FEATURES:

- 100% COTTON VELOUR.
- WITH HOOD & ARM HOLES.
- 70CM FROM SHOULDER TO HEM.



TWF LARGE BEACH TOWEL

CODE: 1029

FEATURES:

- LARGE TOWEL.
- 100% COTTON VELOUR.
- 75CM X 150CM.



BABY HOODED SWIM TOWEL

CODE: 1830
SIZES: 60 X 70CM
COLOURS: MULTI-COLOUR

FEATURES:

- LIGHTWEIGHT MICROFIBRE.



SIZE CHART

MENS

CODE	HEIGHT (FT)	CHEST(INCH)	CHEST(CM)	WAIST(INCH/CM)
SML	5'3" - 5'5"	34 - 36	86 - 91	30" / 76
MED	5'6" - 5'8"	36 - 38	91 - 97	32" / 81
MTL	5'10" - 6'0"	36 - 38	91 - 97	32" / 81
MLG	5'8" - 5'10"	38 - 40	97 - 102	34" / 86
LGE	5'10" - 6'0"	40 - 42	102 - 107	36" / 91
XLG	6'0" - 6'2"	42 - 44	107 - 112	38" / 96
XXL	6'2" - 6'4"	44 - 46	112 - 117	40" / 101
3XL	6'4" +	46 - 48	117 - 122	42" / 106

KIDS

CODE	AGE	CHEST(INCH)	CHEST(CM)	NECK TO CROTCH
K02	1-2	20.5	52	14/36
K03	2-3	21.5	54	15/38
K04	3-4	22	56	16/40
K06	5-6	23	58	16.5/42
K07	6-7	24.5	62	17/44
K08	7-8	25	64	18/46
K09	8-9	27	68	19/49
K11	10-11	28.5	72	20.5/52
K12	11-12	30.5	77	21/54
K13	12-13	31.5	80	21.5/55
K15	14-15	33.5	85	22/56

LADIES

CODE	BUST(INCH)	BUST(CM)	WAIST(INCH)	WAIST(CM)
8	36.5	93	32.5	83
10	38	97	34	86
12	40	101	36	91
12/14	40.5	102.5	37	93
14	41	104	37.5	95
16	43	109	38.5	98
18	44	112	40	102
20	46	116	42	106
12	47.5	120	43.5	110

WETSHOES

CODE	UK SIZE	EU SIZE	CODE	UK SIZE	EU SIZE
022	4	22	034	2	34
023	5	23	036	3	36
024	6	24	037	4	37
025	7	25	038	5	38
026	8	26	040	6	40
027	9	27	041	7	41
028	10	28	042	8	42
029	11	29	043	9	43
030	12	30	044	10	44
031	13	31	045	11	45
032	1	33	046	12	46

